

ANITO

By Justin Talplacido Shoulder

Access Guide

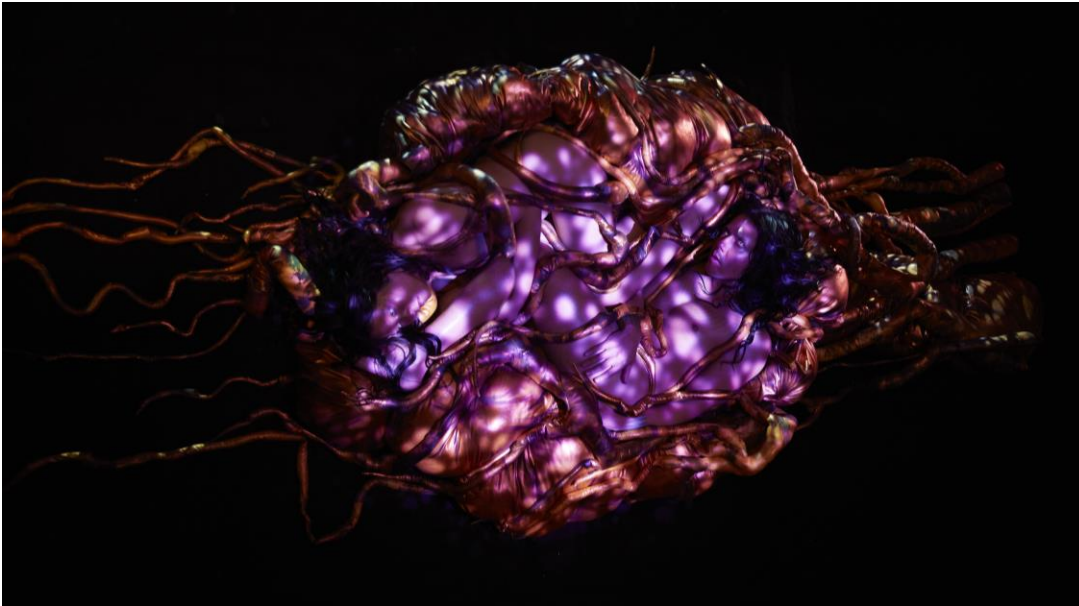


Image credit: Liz Ham

Image description: Two performers lie entwined in the tendrils of an elaborate costume. The performers are wearing bright purple and are dappled with light.

Updates to this document

Please note, changes are being made by artists until opening. We will endeavour to provide the latest access information on performances to ticket holders across key stages of rehearsal and presentation.

The Arts House website will contain the most up to date version of this document.

This document was created: 25 April 2024

Revision 1: 21 May 2024

Contents

Updates to this document	1
Where	3
When	3
Access Services	3
Performers	5
Sensory Elements	5
Sound	5
Lighting	6
Physical	6
Smell	6
Visual	6
Entry to space	6
Shocks or surprises	6
Audience experience	6
Social expectations	6
Performance expectations	7
Other	7
Content Warnings	7
The Venue	8
Front Entrance	8
Accessible Entrances	9
Box Office	10
Ushers	10
Bar	11
Quiet Space	11
Bathrooms	12
Door to Main Hall	13
Lift	14
Transport	14
Tram	14
Train	15
Bus	15

Parking	15
COVID Safety	15

Where

Arts House
521 Queensberry Street
North Melbourne VIC

When

Wednesday 5 – Sunday 9 June 2024

Wednesday 5 June, 7.30pm

Thursday 6 June, 7.30pm

Friday 7 June, 7.30pm

Saturday 8 June, 2pm & 7.30pm

Sunday 9 June, 5pm

Duration: 60 minutes

Access Services



Tactile Tour and Audio Described Performance - Saturday 8 June, 2pm

Audio describers are people who describe the actions, costumes, scenery and other visual elements during a performance. If you are blind or have low vision, you can ask to use this service. You will be provided with a personal headset to hear the Audio description of the performance. There will be a tactile tour 1 hour prior to the show start time as part of this service. A Tactile Tour invites patrons who are blind or have low vision to explore the set, props and costumes prior to the performance with their companions.



Assistance Animal are welcome.



Assistive Listening is available free of charge. Ask staff for assistance on arrival.



Visual Rating 50% – this performance has music and sounds in the background.



Aural Rating 50% – this performance has music and sounds in the background.



Companion card holders are welcome.



Quiet space available.



This performance is fully wheelchair accessible.

Performers

There are two performers in this work.

Justin Shoulder



Eugene Choi



Sensory Elements

Sound

This work contains very loud sounds and music, including low and high frequencies, vibrations and sudden sounds. The sound surrounds the entire performance space.

You might feel vibrations under the seats as the base speaker is positioned under the seating bank.

Lighting

The lighting and projected images will change in colour and intensity, with darkness and flashing lights. No strobe lighting is used in this performance.

A bright light shines directly into the audience for a short time.

Physical

The sets are made of inflatables that will inflate and deflate during the show.

Smell

There are no scents or perfumes added to this performance, but you may smell the haze used during the show.

Visual

The performers wear multiple costumes that look like mythical creatures. The costumes look like mixtures of animals, plants, and machines.

The performers interact with an inflatable set, that looks like a mythical world. There will be moving images, shapes and lights projected onto the performers and the sets throughout the show.

Audience Experience

Entry to space

The audience will enter from the main doors of the foyer.

There will be an Acknowledgement of Country before each show in the foyer. Following this, performance space will open for audiences to enter and take their seats.

Shocks or surprises

There are moments when the lighting might flash or flicker, and there may be sudden sounds.

Audience experience

There is no participation by the audience.

Social expectations

There are no breaks in the show. There will be a lockout once the show begins. This means that once the performance has started, you should stay in your seat and not leave

the performance space. If you need to leave the performance space, you will not be allowed to re-enter. Please speak to the front of house staff for assistance.

Performance expectations

There are two people on stage, their names are Justin and Eugene. Within the show, there are moments when they leave the stage, disappearing for a short time, and reappear.

Other

Content Warnings

ANITO contains nudity, haze, loud music and sudden loud noises, abrupt lighting changes, low lights and lights that change colour and intensity.

A lockout applies for this show. Once the performance begins, audiences will not be permitted to enter. Please arrive early to avoid disappointment.

The Venue



Image: North Melbourne Town Hall features giant red letters that say ARTS HOUSE out the front of it.

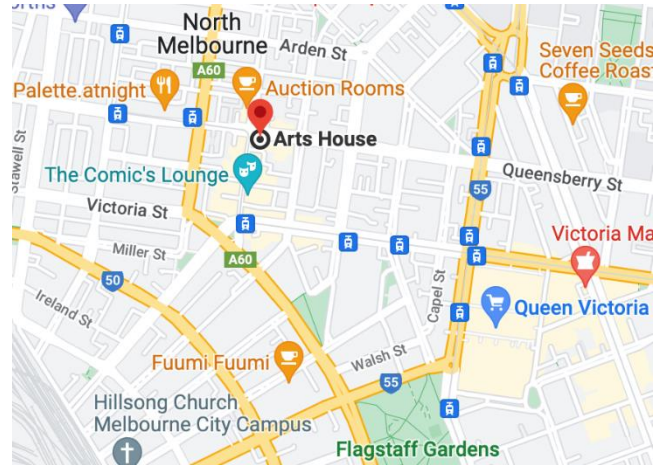


Image: a map of Arts House and its surrounding area. [LINK TO MAP](#)

Front Entrance



Accessible Entrances



There are two Accessible Entrances. The first is on Errol St next to the Post Office.



Image: Errol Street entrance next to the Post office with wheelchair accessible ramp or two steps with grab rails.



Image: View of door entrance.

The second Accessible Entrance is towards the end of George Johnson Lane.



Image: View of George Johnson Lane from Errol St. The laneway passes through an archway with a brick wall at the end.

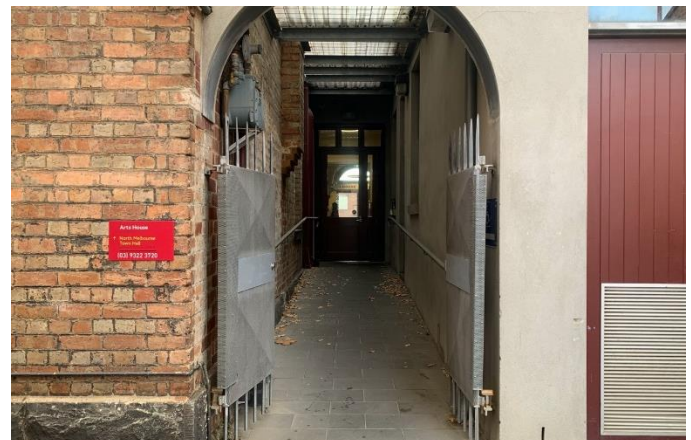


Image: view of the ramp leading from George Johnson Lane to the automated door which opens into the Arts House foyer.

Box Office



Box Office is located in the foyer under the stairwell.

Ushers



Ushers will be wearing black with an Arts House Logo on the left-hand shoulder.

Bar



Bar staff will be wearing black with an Arts House Logo.

We have a range of alcoholic and non-alcoholic beverages for sale.

We are a cashless venue and accept EFTPOS, Visa and Mastercard payments.

Quiet Space



Arts House Quiet Space is located on Ground Level and is nearby reception and opposite the accessible bathrooms. It includes a range of seating options including soft furnishings, dimmable lights, sensory and stim objects. It is open during venue opening hours and events as a quiet space, prayer or parenting space.



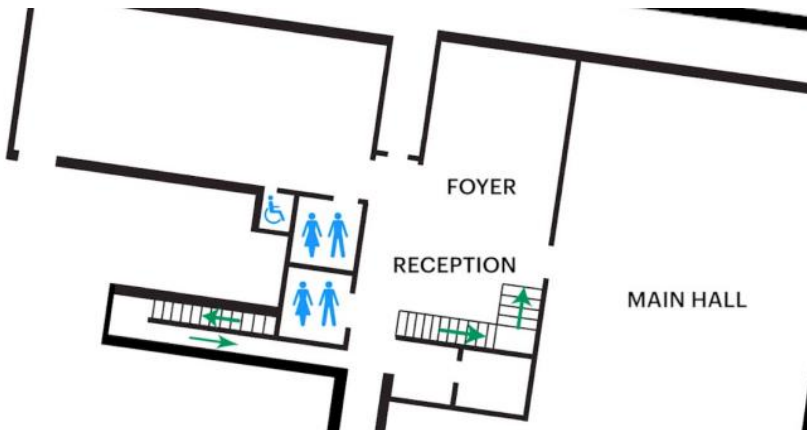
Image: Quiet space with lights dimmed



Image: Quiet space kitchenette and book shelf

Bathrooms

All bathrooms have Dyson hand dryers with sensor activation. There is an accessible bathroom that is single use on ground level opposite the Quiet Space. There is another accessible bathroom upstairs – this is accessible via lift or stairs.



ARTS HOUSE

Door to Main Hall

The Performance is in the Main Hall.

It is on the ground floor.

It is to the left of the box office desk and right of the bar.

An artist statement is available on signage and warnings on the door.



ARTS HOUSE

Lift

The lift is located behind reception desk in the foyer.

The closest entry to the lift is via George Johnson Lane.



Transport

Tram

Route 57 (High Floor trams only)

Stop 12, North Melbourne Town Hall.

Please note, this is not a wheelchair accessible tram

[GETTING TO ARTS HOUSE VIDEO LINK](#)

ARTS HOUSE

Train

Arts House is 1.1km from
North Melbourne Train Station,
approximately 16 minute walk

[North Melbourne Station Information](#)

1.2km from Flagstaff Station,
approximately 15 minute walk

[Flagstaff Station Information](#)

Bus

Bus number: 216

Parking

There is limited paid on-street parking on Queensberry Street and Errol Street.

There are two accessible on street car parking spaces on Queensberry Street (150m to our accessible Errol Street entrance) for holders of a Parking Permit for Disabled people.

COVID Safety

Please note: If you have a cough, sore throat, fever, shortness of breath or flu-like symptoms, you must not attend our venue or programs in person.

We will provide a refund if you need to cancel your attendance due to illness. Please [contact us](#) by 9am on the day of the event.

To minimise the risk of COVID-19 transmission, we advise all patrons, artists and staff to:

- Practise physical distancing where possible
- Practise good hygiene by washing and or sanitising your hands often
- Wear a mask as directed by Victorian Government guidelines

Throughout the venue you will find:

ARTS HOUSE

- hand sanitiser stations available
- masks available (ask one of our staff for assistance)
- increased signage to direct patron movement and avoid crowd congestion

We also ensure that spaces are well ventilated.

Staying COVID-safe remains important. We must all follow these steps:

- Follow the Victorian Government's measures on how to stay safe.
- Wear face masks where required or when you cannot safely socially distance.
- Practise COVID-safe hygiene protocols.
- Test for COVID and get free rapid antigen tests at nominated City of Melbourne customer service and library sites.