

CUDDLE

By Harrison Ritchie-Jones

Access Guide



Image Credit: Jo Duck

Image Description: Two figures wearing balaclavas, no shirts, denim jeans and sneakers. One of the figures has their legs wrapped nonchalantly around the others neck as they both stare at the camera. The background is a single cold blue tone.

Updates to this document

Please note, we will endeavour to provide the latest access information on performances to ticket holders across key stages of rehearsal and presentation.

Arts House website will contain the most up to date version of this document and all ticket holders will be notified of any final revisions made 3 days prior to the event.

This document was created: 12 February 2024

Last updated: 19 February 2024

Contents

Updates to this document	1
Where	3
When	3
Access Services	3
Sensory Elements	5
Sound	5
Lighting	6
Physical	6
Smell	6
Shocks or surprises	9
Audience experience	9
Social expectations	9
Performance expectations	9
Other	10
Content Warnings	10
The Venue	11
Front Entrance	11
Accessible Entrances	12
Box Office	13
Ushers	13
Bar	14
Quiet Space	15
Bathrooms	15
Performance Space	16
Lift	16
Transport	17
Tram	17
Train	18
Bus	18
Parking	18
COVID Safety	18

Where

Arts House

521 Queensberry Street

North Melbourne VIC

When

Tuesday 20 – Sunday 25 February 2024

Tuesday 20 Feb, 7.30pm

Wednesday 21 Feb, 7.30pm

Thursday 22 Feb, 7.30pm

Friday 2 Feb, 7.30pm

Saturday 24 Feb, 7.30pm

Sunday 25 Feb, 5pm

Duration: 45 minutes

Suitable for ages 10+

Access Services



Tactile Tour and Audio Described performance Thursday 22 February, 7.30pm.

Audio describers provide verbal descriptions of actions, costumes, scenery and other visual elements of performances via personal headsets. A pre-show tactile tour will commence approx. 1 hour prior to the show start time. This service invites patrons who are blind or have low vision and their companions to explore the set, props and costumes prior to the performance.



Assistance Animal are welcome.



This performance is wheelchair accessible.



Visual Rating 50% - includes dialogue and background music or sounds, so Deaf and hard of hearing audiences can have some engagement with the event.



You can book your complimentary companion ticket online or over the phone when purchasing tickets to any show. Contact our box office team for more information.



Quiet Space Available - located on Ground Level near reception, this is a shared space suitable for recovery from sensory overload, prayer, or parenting. It features a range of seating options, dimmable lights, sensory and stimulating objects. Anyone is welcome to access this space during venue operating hours and events.

Performers

There are two performers in this show - Harrison Ritchie-Jones and Michaela Tancheff.



Image description: Two figures wearing black balaclavas, red shirts, denim jeans and padded wrestling pants. One of the figures is holding the other in the air diagonally. The background is a single bright blue tone.

Sensory Elements

Sound

Sound, silence and voice modulation effects are a prominent feature in this performance.

A soundtrack will play at different intervals throughout the performance, offset with moments of silence in which the performers physical exertion is highlighted. There are moments where the performers speak into handheld microphones with an anonymous voice modulation effect added.

The soundtrack includes bell drones, drone undercurrents, club tracks and menacing orchestral music. The speakers face the audience in four directions, like what you might find in a wrestling ring. The music can be quite loud at times.

There are rubber chickens hidden inside the performers outfits that make squeaking sounds when pressed through movement.

Lighting

Dynamic lighting states are featured in this performance, which includes moments of quick flashing lights, strobe lighting and changes in colour and intensity.

The lights are designed to focus on the main performance space.

Physical

You will see Harrison and Michaela perform movement sequences that might look dangerous. These have been pre-rehearsed and are safe.

You might feel vibrations in the floor from Harrison and Michaela performing in the space.

The performance is designed for audiences to stand or be seated on the floor. There are slightly raised bleacher formations at either end of the room you can stand on. There are rows of chairs lining two sides of the performance space and positioned in close proximity to the performers.

Smell

There are no scents added to this performance, but you may be able to smell sweat on the performers if you are close to the performance space.

Visual

Harrison and Michaela wear balaclavas for the duration of the performance. When they enter, they are fully clothed in red long sleeve shirts, ski gear, jeans and sneakers. Throughout the performance they remove layers of clothes until they are only wearing diaper like shorts and their balaclavas.

There will be video projection and live camera feeds on the projection screens throughout the show. The roving videographer will move inside a marked lane, capturing videos of Harrison and Michaela as they dance. Your image may be shown in the background of a camera shot that is projected onto the screen.



Image: *Set up of performance space for CUDDLE*





Image: *Performers in centre of space, with roving videographer visible in marked 'lane'.*

Audience Experience

Entry to space

The audience will enter from the main doors of the foyer.

The performance space will be open 30 minutes prior to start time.

There will be a small number of seats for those who require it, with the alternative being standing or seated on the floor.

If you require a seat, please see the Front of House ushers on arrival.

The main hall doors will close at the performance start time.

Approximately 5 minutes after the show commences, the performers will enter the theatre and will move through the space. You may need to move for them to pass through to the centre of the space.

Shocks or surprises

There are moments where the lighting may flicker, flash and strobe to match the choreography or music.

Harrison and Michaela undress throughout the performance, to a state of partial nudity.

Audience experience

The performance takes place in close proximity to the audience. Harrison and Michaela may perform near you at different intervals. They will not make physical contact with you or speak to you. You do not have to make eye contact.

This performance may make you feel like you do not know how to respond to what is happening on stage. You may laugh, cry or respond however you like – that is the point of the show!

Social expectations

There is no allocated seating for this performance. Please let the front of house staff know if you would be most comfortable in a particular spot before the doors open. You are welcome to move during the performance and change your proximity to the performers.

There is no lock out (or lock in) for this performance. Audience members are welcome to come and go as they please and access the bathrooms and quiet space.

Performance expectations

There is dialogue throughout the show, both live and in the soundtrack. The dialogue is partial nonsense.

There is no narrative arc to this performance, it is an abstract exploration of Harrison's lived experience, combining elements of different styles of dance, sport and martial arts in a humorous way.

There are two people performing, their names are Harrison and Michaela. They can be difficult to tell apart until they begin removing layers of their costume.

Other

Content Warnings

CUDDLE contains partial nudity, haze effects, quick flashing and strobing lights, changes in colour and intensity, voice manipulation, live videography and projection.

Partial Nudity

Harrison and Michaela enter the space fully clothed, and will remove layers of clothing throughout the performance until they are only wearing shorts that resemble diapers, their sneakers and their balaclavas.

Dynamic Lighting

The lighting changes throughout the piece, occasionally flashing and strobing to match choreography and music.

Voice Manipulation

Harrison and Michaela will speak into hand held mics that have an added effect which distorts their voices to sound deep and anonymous.

Live Videography

There will be live videography projected on to two screens at either end of the Main Hall, which you may appear in the background of.

Projection

There will be a mixture of pre-recorded video content of Harrison and Michaela cuddling in areas around the North Melbourne Town Hall. Once they have entered the performance space, the live videography will be projected on the screens.

General Notes

An Acknowledgement of Country will play in the opening sequence of the show.

The Venue



Image: North Melbourne Town Hall features giant red letters that say ARTS HOUSE out the front of it.

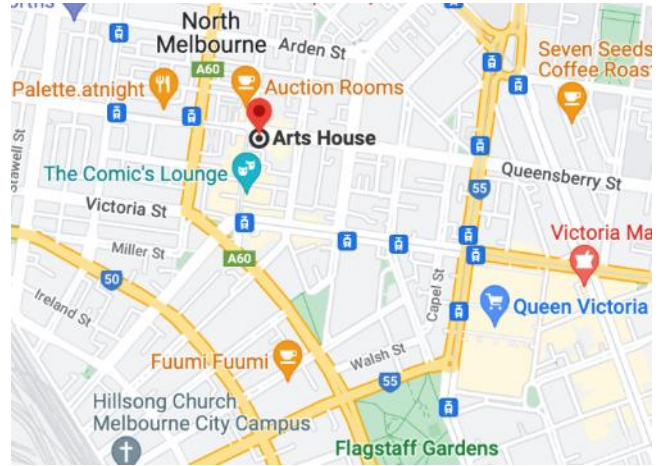


Image: a map of Arts House and its surrounding area. [LINK TO MAP](#)

Front Entrance



Accessible Entrances



There are two Accessible Entrances. The first is on Errol St next to the Post Office.



Image: Errol Street entrance next to the Post office with wheelchair accessible ramp or two steps with grab rails.



Image: View of door entrance.

The second Accessible Entrance is towards the end of George Johnson Lane.

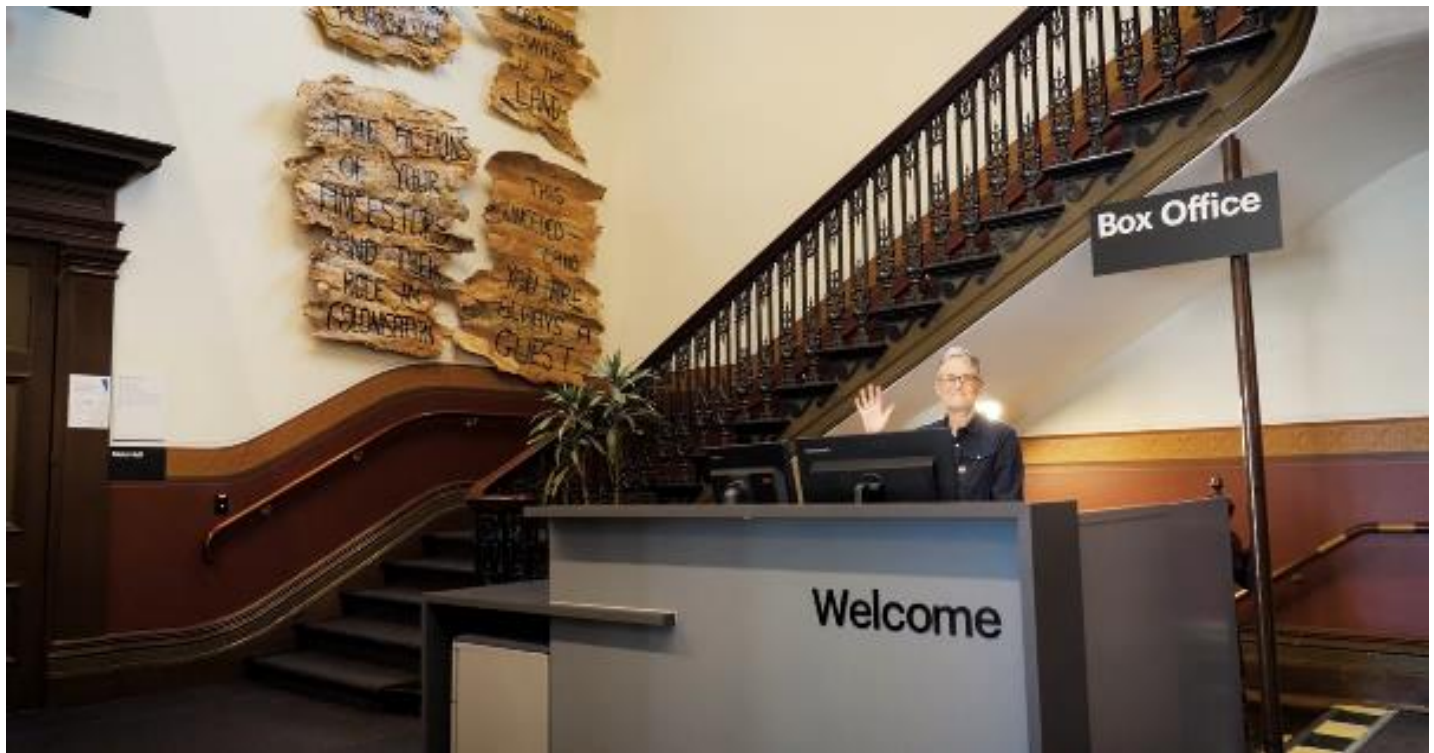


Image: View of George Johnson Lane from Errol St. The laneway passes through an archway with a brick wall at the end.



Image: view of the ramp leading from George Johnson Lane to the automated door which opens into the Arts House foyer.

Box Office



Box Office is located in the foyer under the stairwell.

Ushers



Ushers will be wearing black with an Arts House Logo on the left hand shoulder.

Bar



Bar staff will be wearing black with an Arts House Logo.

We have a range of alcoholic and non-alcoholic beverages for sale.

We are a cashless venue and accept EFTPOS, Visa and Mastercard payments.

Quiet Space



Arts House Quiet Space is located on Ground Level and is nearby reception and opposite the accessible bathrooms. It includes a range of seating options including soft furnishings, dimmable lights, sensory and stim objects. It is open during venue opening hours and events as a quiet space, prayer or parenting space.



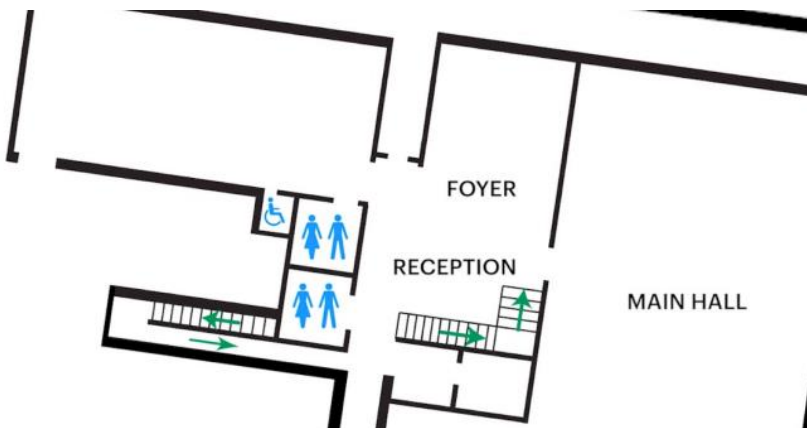
Image: Quiet space with lights dimmed



Image: Quiet space kitchenette and book shelf

Bathrooms

All bathrooms have Dyson hand dryers with sensor activation. There is an accessible bathroom that is single use on ground level opposite the Quiet Space. There is another accessible bathroom upstairs – this is accessible via lift or stairs.



ARTS HOUSE

Performance Space

The Performance is in the Main Hall.

It is on the ground floor.

It is to the left of the box office desk and right of the bar.

An artist statement is available on signage and warnings on the door.



Lift

The lift is located behind reception desk in the foyer.

The closest entry to the lift is via George Johnson Lane.

ARTS HOUSE



Transport

Tram

Route 57 (High Floor trams only)

Stop 12, North Melbourne Town Hall.

Please note, this is not a wheelchair accessible tram

[GETTING TO ARTS HOUSE VIDEO LINK](#)

ARTS HOUSE

Train

Arts House is 1.1km from
North Melbourne Train Station,
approximately 16 minute walk

[North Melbourne Station Information](#)

1.2km from Flagstaff Station,
approximately 15 minute walk

[Flagstaff Station Information](#)

Bus

Bus number: 216

Parking

There is limited paid on-street parking on Queensberry Street and Errol Street.

There are two accessible on street car parking spaces on Queensberry Street (150m to our accessible Errol Street entrance) for holders of a Parking Permit for Disabled people.

COVID Safety

Please note: If you have a cough, sore throat, fever, shortness of breath or flu-like symptoms, you must not attend our venue or programs in person.

We will provide a refund if you need to cancel your attendance due to illness. Please [contact us](#) by 9am on the day of the event.

To minimise the risk of COVID-19 transmission, we advise all patrons, artists and staff to:

- Practise physical distancing where possible
- Practise good hygiene by washing and or sanitising your hands often
- Wear a mask as directed by Victorian Government guidelines

ARTS HOUSE

Throughout the venue you will find:

- hand sanitiser stations available
- masks available (ask one of our staff for assistance)
- increased signage to direct patron movement and avoid crowd congestion

We also ensure that spaces are well ventilated.

Staying COVID-safe remains important. We must all follow these steps:

- Follow the Victorian Government's measures on how to stay safe.
- Wear face masks where required or when you cannot safely socially distance.
- Practise COVID-safe hygiene protocols.
- Test for COVID and get free rapid antigen tests at nominated City of Melbourne customer service and library sites.